



www.chinaseal.com

版权属慈溪红叶密封制品有限公司所有  
未经书面允许不得翻印

## 慈溪红叶密封制品有限公司

地址：中国宁波慈溪市北二环中路 275 号

邮编：315300

电话：+86-574-63896038

传真：+86-574-63800036

网址：<http://www.chinaseal.com>

电子邮箱：[hongye@public.cx.nbptt.zj.cn](mailto:hongye@public.cx.nbptt.zj.cn)

电子邮箱：[sales@chinaseal.com](mailto:sales@chinaseal.com)

## CIXI HONGYE SEALING AND PACKING CO.,LTD.

Address: No. 275 Beierhuan Middle Road

Cixi City Ningbo P.R.China 315300

Tel: +86-574-63896038

Fax: +86-574-63800036

<http://www.chinaseal.com>

[hongye@public.cx.nbptt.zj.cn](mailto:hongye@public.cx.nbptt.zj.cn)

[sales@chinaseal.com](mailto:sales@chinaseal.com)



[www.chinaseal.com](http://www.chinaseal.com)

慈溪红叶密封制品有限公司  
CIXI HONGYE SEALING AND PACKING CO., LTD.



## 企业简介



慈溪红叶密封制品有限公司坐落在世界第一大跨海大桥——杭州湾跨海大桥南端，交通十分便利，公司占地面积3000多平方米，厂房2000多平方米，主要生产设备100多台，是中国填料静密封行业会员企业。本公司积十多年生产密封制品的经验，专业开发生产和销售各类流体密封制品，如金属缠绕垫片、石墨高强垫片、RTJ垫片、包复垫片、无石棉板垫、石墨编织盘根、芳纶盘根、石棉制品、玻纤制品、陶瓷纤维制品、聚四氟乙烯制品。本公司产品不但解决了国内许多电厂、煤气厂、化工厂等的密封泄露问题，而且已大量出口到欧洲、中东、南美洲以及东南亚等许多国家和地区、深得客户信赖。公司竭诚为国内外客户提供一流的产品和服务。

## BRIEF INTRODUCTION

Cixi Hongye Sealing & Packing Co., Ltd located in the biggest bestraddle sea bridge ----- south of Hanhzhou Bay bridge, which the traffic is very convenient. There are more than 3000M2 productive sites and 2000 M2 workshop, over 100 Sets equipment produced in our factory, is the member of corporation of glands sealing line in China. Our corporation have the experience in producing sealing products for more than 10 years , specializing in developing & producing all kinds of liquid sealing products , Such as spiral wound gasket , graphite reinforced gasket, RTJ gasket, enveloped gasket, non asbestos sheet gasket, graphite braided packing, Kevlar braided packing, asbestos products, glass fiber products, ceramic fiber products etc. Our corporation not only solve the problem of sealing leakage in the most electricity factories, gas factories and chemical plants, but also export a great deal to many countries and regions for example European, Middle-East and South-east Asia. The customers have deeply trust of it. Our corporation offers the first-class products and service wholeheartedly for the customers in home and abroad.





### P1100 膨胀石墨编织盘根

膨胀石墨编织盘根是由纯膨胀石墨线，经不同编织工艺编织而成的盘根，它可分为含茵苣耐尔丝的膨胀石墨编织盘根，玻纤增强的膨胀石墨编织盘根，浸渍四氟的膨胀石墨编织盘根，无热失重的膨胀石墨编织盘根等。

适用于许多介质，如热水、蒸汽、酸、碱、有机溶剂、碳氢化合物、低温液体等。其密封性能更优越，更安全，是解决密封问题的最有效的组合元件。

#### EXPANDED GRAPHITE BRAIDED PACKING

Expanded graphite braided packing is made from expanded pure graphite yarn, braided into packing through all kinds of technology of braiding. It can be divided into expanded graphite braided packing with inconel wire inserted, expanded graphite braided packing with fiberglass, expanded graphite braided packing impregnated with PTFE dispersion, expanded graphite braided packing with less weight loss ect.

The products are almost suitable to all media, such as hot water, steam, acids, alkalis, organic solvents, hydrocarbons, low temperature liquids, ect. The sealing capability is more better and safety. It is the most effective composite parts for solving problems.



#### 膨胀石墨编织盘根的主要指标

Main specification of expanded graphite fiber braided packing :

PH值PH range	0 - 14
温度 Temperature	1650℃ Non oxidizing condition
	650℃ Steam
	450℃ Oxidizing condition
	-204℃ Cryogenics
压力Pressure	9—45MPa
线速度Velocity	2—15m/s

膨胀石墨编织盘根类型	密度(g/cm <sup>3</sup> ) Density(g/cm <sup>3</sup> )
Types of expanded graphite braided packing	
P1101 棉纱增强的膨胀石墨编织盘根	
P1101 Types of expanded graphite braided packing with cotton fiber	
P1102 玻纤增强的膨胀石墨编织盘根	
P1102 Expanded graphite braided packing reinforced with fiberglass	
P1103 SS304不锈钢丝增强的膨胀石墨编织盘根	
P1103 Expanded graphite braided packing reinforced with SS304 wire	
P1104 SS316不锈钢丝增强的膨胀石墨编织盘根	
P1104 Expanded graphite braided packing reinforced with SS316 wire	
P1105 Ni丝增强的膨胀石墨编织盘根	
P1105 Expanded graphite braided packing reinforced with Ni wire	
P1106 Inconel 丝增强的膨胀石墨编织盘根	
P1106 Expanded graphite braided packing reinforced with Inconel wire	
P1107 5根不锈钢丝增强的膨胀石墨编织盘根	
P1107 Expanded graphite braided packing reinforced with 5 stainless steel wire	
其它根据客户来样或要求供货	Others can be supplied according to customer's requirement or sample.





## P1111 碳纤维编织盘根

碳纤维编织盘根是由腈纶纤维预氧化后编织而成的盘根，表面用聚四氟乙烯乳液和润滑剂处理而成。

它应用领域相当之广。比如：它可用来密封水、海水、工厂废水、盐水溶液、矿油等介质的离心泵，搅拌器、拌合器、船尾浆轴等，而且在非石棉制品中相对便宜。

### CARBONIZED FIBER PACKING

Carbonized fiber packing is a braided packing made of carbonized poly acrylonitrile fiber and finished with PTFE dispersion and lubricant. It covers wide range of application, for example, it can seal water, brine, factory wastesalt solutions, mineral oil etc. for centrifugal pumps, agitators, mixers, sterntubes etc. What's more, it is relatively economic among non-asbestos packing.

碳纤维编织盘根的主要指标：

Main specification of carbonized fiber braided packing

温度Temperature	250°C
压力Pressure	2-30MPa
PH值PHrange	2-12
密度Density	1.1-1.3 g/cm <sup>3</sup>
线速度Velocity	2-16m/s

## P1121 芳纶纤维编织盘根

芳纶纤维编织盘根是由杜邦Kevlar纤维，经浸渍聚四氟乙烯乳液等润滑剂处理再编织成方形截面而成。由于Kevlar纤维其强度和模量有钢丝之强度，这种盘根与其它各种编织盘根相比，能承担更高的介质和压力，它可和其它种类盘根分隔安装或作为端面环，即可组成各种不同特性的盘根组。

这种盘根主要是在泵系统内作为石棉的替代品，其性能比石棉更优异，而且在石棉可用的领域它都能胜任，在极度恶劣的条件下，普通石棉盘根不能提供满意的结果，而这种盘根能有较长的寿命，常被用于纸浆，锡矿及发电厂的给水泵等场所。

### KEVLAR FIBER BRAIDED PACKING

Kevlar fiber braided packing is made of Du Pont's Kevlar yarn impregnated with PTFE dispersion and processed with lubricant, braided into square cross section. As the strength and module of Kevlar is as high as the steel-like strength. So this packing combined with other kinds of braided packing, they can resist more serve media and higher pressure. It can be installed separately or as end rings with other kinds of packing to combine different characteristics into packing set.

This packing is mainly used as substitute of asbestos in pump systems.

Its property is better than asbestors, and it covers all the services ranges which asbestos packing provided and more. Under very bad conditions where ordinary asbestos packing can not provided the satisfied effect. But this packing has long service. It is usually applied to pulp factory, sand slurry, tin mine and feed water pump of power plant etc.



芳纶纤维编织盘根的主要指标：

Main specification of Kevlar fiber braided packing:

温度Temperature	200-280°C
压力Pressure	2-10MPa
PH值PHrange	2-13
密度Density	1.4 g/cm <sup>3</sup>
线速度Velocity	2-18m/s

### P1130 纯四氟编织盘根

纯四氟编织盘根是由聚四氟乙烯线制成的编织盘根，不浸渍任何聚四氟乙烯乳液和油脂类，并具有密封高速转轴性能和附加的耐高温剂，被建议用于化工、食品、药品等不允许有污染的操作场合，也可用于除了可溶性碱金属以外的所有化学介质的密封。

#### PURE PTFE FIBER BRAIDED PACKING

Pure PTFE fiber braided packing is a braided packing made of PTFE yarn without soaking any PTFE dispersion and lubrication but with greatly enhanced ability to seal high speed shafts with the addition of inactive and heat-resisting agents. It is recommended for chemical engineering, foodstuff, pharmaceutical where contamination is not allowed. Also it can be applied to seal all chemicals except molten alkali metals.



#### 纯四氟编织盘根的主要指标

##### Main specification of pure PTFE braided packing

PH值PHrange	0-14
温度Temperature	260°C
线速度Velocity	0-20m/s
压力Pressure	0-4MPa
密度Density	1.4-1.6 g/cm <sup>3</sup>

> P1130 纯四氟编织盘根	P1130 Pure PTFE fiber braided packing
P1131 纯四氟编织盘根	P1131 Pure PTFE fiber braided packing
> P1132 含油四氟盘根	P1132 Pure PTFE fiber braided packing with oil
P1133 纯四氟丝浸四氟盘根（割裂丝）	P1133 Pure PTFE filament packing

### P1140 四氟石墨纤维编织盘根

四氟石墨纤维编织盘根是由含有石墨粒子的聚四氟乙烯线编织而成。它具有很强的扯裂强度和较高的热导性，低的摩擦系数又使它具有稳定和长寿命。建议用于泵轴密封，也可用于密封水、蒸汽、溶剂等介质的搅拌器、混合器，压热器及离心泵等。

#### PTFE GRAPHITE FIBER BRAIDED PACKING

PTFE graphite fiber braided packing consists of PTFE yarn containing graphite particles. It has great tear strength and high thermal, low coefficient of friction also makes it stability and long service. Recommended for sealing pump shafts, and it is to seal water, steam, solvents for agitators, mixers, autoclaves and centrifugal pumps etc.



#### 四氟石墨纤维编织盘根的主要指标

##### Main specification of PTFE graphite fiber braided packing

PH值PHrange	0-14
温度Temperature	280°C
线速度Velocity	0-20m/s
压力Pressure	3-30MPa
密度Density	1.4-1.6 g/cm <sup>3</sup>

> P1141 高强度四氟石墨纤维编织盘根（石墨含量12%）
P1141 High strong PTFE graphite fiber braided packing (graphite content:12%)
> P1142 高强度四氟石墨纤维编织盘根（石墨含量25%）
P1142 High strong PTFE graphite fiber braided packing (graphite content:25%)
> P1143 普通强度四氟石墨纤维编织盘根
P1143 General strong PTFE graphite fiber braided packing

其它根据客户来样或要求供货

Others can be supplied according to customer's requirement or sample.



## P1151 苧麻纤维编织盘根

苧麻纤维编织盘根是一种可任意弯曲的易安装的盘根，能和轴杆柔和的接触。它可用于许多领域，如造船、造纸工业、饮料工业、酿造等，并专门指定用于食品和药物工业上。适用于各种水质、海水、咸水、油类、脂类、弱酸、弱碱等，尤其能耐研磨性。

### RAMIE FIBER BRIDED PACKING

Ramie fiber braided packing is readily controllable packing which can treat shafts gently. It uses in many fields, such as ship building, paper-making industry, beverages industry and brewing etc. And especially, it is appointed to use in the foodstuff and pharmaceutical industry. It adapt to all kinds of water, sea water, brines, oils, greases, weak acids and alkalis etc., especially resistant to abrasion.



苧麻纤维编织盘根的主要指标：

Main specification of carbonized fiber braided packing

PH值PHrange	0—12
温度Temperature	50—140℃
线速度Velocity	2—12m/s
压力Pressure	2—10MPa
密度Density	1.25g/cm <sup>3</sup>

## P1160 石棉纤维编织盘根

石棉纤维编织盘根是由温石棉线编织经浸渍PTFE乳液而成，具有更优异的密封效果，常用于泵、阀、法兰等。

### ASBESTOS PACKING

Chrysotile asbestos packing is braided into packing, made of Chrysotile asbestos yarn and impregnated with PTFE. It has more better effect of sealing. Used for all rotating and reciprocating pumps, mixers and valves sealing against hot and cold water, caustics, mild acids, difficult chemicals, air, gases, steam, solvents, oil and most marine applications.



石棉纤维编织盘根的主要指标

Main specification of asbestos packing

PH值PHrange	3—14
温度Temperature	280℃
线速度Velocity	12m/s
压力Pressure	3—20MPa

▶ P1161 石棉纤维浸四氟盘根

P1161 Chrysotile asbestos packing impregnated with PTFE

▶ P1162 石棉石墨盘根

P1162 Chrysotile asbestos packing impregnated with graphite

其它根据客户来样或要求供货

Others can be supplied according to customer's requirement or sample.

### P1170芳纶包角黑四氟盘根

### P1180芳纶黑四氟交织盘根

以芳纶纤维和黑四氟为原料采用特殊工艺混合编织而成。高强度的芳纶材料包覆在产品的四角,使产品更耐磨损。适用于较高线速度和较高介质压力的动态密封。

#### PTFE GRAPHITE PACKING ARAMID CORNERS

#### PTFE GRAPHITE PACKING INTER ARAMID

It is a high-quality braided packing made of PTFE yarns fiber with incorporated graphite and the reinforced corner yarns of Aramid fiber. It can prevent gap from extrusions in the present of high pressure and temperature. It has good sliding velocity and thermal conductivity. It enables to seal high pressure piston pump during along running period. It can be used seal water, sewage water, hot water, oils, greases, weak acids and alkaline solutions, abrasive media.



#### 芳纶包角黑四氟盘根

#### 芳纶黑四氟交织盘根的主要指标

Main specification of ptfе graphite packing aramide corners and ptfе graphite packing inter aramide

PH值PHrange	2-14
温度Temperature	-100~280° C
线速度Velocity	0-20m/s
压力Pressure	4-25MPa



### P1190亚克力纤维编织盘根

以聚丙烯晴纤维为原料, 经增强处理、编织、浸渍聚四氟乙烯而成。具有高强度, 耐磨耗、抗冲刷等性能, 是石棉盘根的理想替代品。适用于较高线速度和较高压力的泵、阀、釜作填料密封。

#### ACRYLIC FIBER PACKING

Acrylic fiber packing is made from reinforced acrylic fiber with over 60% concentrated PTFE dispersion with added break-in lubricant, lightly tensioned construction offers flexibility and compressibility for good sealing contacted, It is valve and pumps packing a direct replacement for asbestos packings with PTFE.



#### 亚克力纤维编织盘根的主要指标

Main specification of acrylic fiber packing

PH值PHrange	2-12
温度Temperature	-100~250°C
线速度Velocity	0-12m/s
压力Pressure	5-20MPa

#### P1191 亚克力纤维编织浸四氟盘根

P1191 Acrylic fiber packing impregnated with PTFE

#### P1192 亚克力纤维编织浸四氟+石墨粉盘根

P1192 Acrylic fiber packing impregnated with PTFE +graphite

其它根据客户来样或要求供货

Others can be supplied according to customer's requirement or sample.



## P1201有机交联聚合纤维编织盘根

有机交联聚合纤维盘根是采用交联结构的有机聚合纤维材料为骨架，该纤维具有良好的耐热性能和耐腐蚀性能。是一种性能优异的密封填料。特别适用于高线速度、高压、含有悬浮颗粒及腐蚀性介质条件下的往复或旋转机械的填料密封。

### NOVOLID FIBER WITH PTFE PACKING

Novolid fiber with PTFE packing is made from kynol, a new type of synthetic heat stable fiber and each fiber impregnated with PTFE dispersion, a special break-in lube added. It is suitable for moderate pump and valve services. Not for sulphuric or nitric acids or strong bases



### 有机交联聚合纤维编织盘根的主要指标

Main specification of novolid (kynol) fiber impregnated

PH值PHrange	1—13
温度Temperature	250°C
线速度Velocity	0—15m/s
压力Pressure	8—25MPa

## P1211碳纤维浸石墨乳盘根

采用进口材料经编织成型、浸渍石墨乳等填充材料、添加润滑剂而成。具有自润滑、高强度、高模量、耐高低温、耐腐蚀等优异性能。特别适用于有腐蚀、高（低）温、高压、含颗粒流体介质在高线速度下的旋转或往复机构的填料密封。

### Carbon fiber with graphite dipped braided packing

Made of imported material through braiding into shape, impregnated graphite powder & applying lubricants. It has good self-lubrication, high strength & modulus, high / low temperature & corrosion resistance etc. especially applicable for packing seal of rotary or reciprocating mechanism in corrosive high / low temperature, high pressure and partic-bearing fluid medium at linear speed.



### 碳纤维浸石墨乳盘根的主要指标

Main specification of Carbon fiber with graphite dipped braided packing

PH值PHrange	0—14
温度Temperature	—200 ~ 600°C
线速度Velocity	0—25m/s
压力Pressure	5—25MPa

### P1221 膨胀石墨模压盘根

膨胀石墨模压盘根是根据尺寸要求模压成环，膨胀石墨模压盘根的弹性和结构性不受化学性的影响，它可提供有效的密封没有任何扭矩损失。

它也可用于密封热水、高温、高压蒸汽、热转换液体、氢气、氨、有机溶剂、碳氢化合物、低温液体等。

#### EXPANDED GRAPHITE MOLDED PACKING

Expanded graphite molded packing is press-molded into a ring form of required dimensions. The resiliency and structure of expanded graphite molded packings are not affected by chemical attack, consequently it provides effective seal without any torque loss.

It can be used to seal hot water, high temperature and pressure steam,

heat transfer fluid, hydrogen gas, ammonia, organic solvents, hydrocarbons, cryogenic liquids ect.

#### 膨胀石墨模压盘根的主要指标

##### Main specification of Expanded graphite molded packing

PH值PHrange	0—14
温度Temperature	—240~3000℃
线速度Velocity	2—15m/s
压力Pressure	25MPa

内径Inner diameter	5mm
外径 Outer diameter	350mm
截面 Cross section	as required
密度Density	1.3—1.6 g/cm <sup>3</sup>



### G2100 石墨切割垫片



### G2220 椭圆高强垫片



石墨切割垫片是从纯石墨板及增强石墨板打孔或切割而成的，它具有良好的防腐性，耐高/低温，良好的压缩回弹性和高强度性，各种各样的圆型的复杂的几何垫片被广泛用于管道、阀门、泵、压力容器、热交换器、冷凝器、发电机、空气压缩机、排气管、制冷机等。

#### EXPANDED GRAPHITE CUT GASKET

Expanded graphite cut gasket are punched or cut from pure expanded graphite sheet and reinforced expanded graphite sheet. Depend on its excellent corrosion resistance, high and low temperature resistance, good compression resilient and high intensity. All kinds of circular, complicated geometric gasket are widely used in pipe, valve, pump, pressure vessel, thermal exchanger, condenser, engine, air compressor, exhaust tube, refrigerating machine, etc.



适用范围 Service range :

增强材料 Reinforced inserted material	耐压 (N/mm <sup>2</sup> ) Stability under compressive stress	温度Temperature(° C)		压缩率(%) Compressibility(%)	回弹率(%) Recovery(%)
		氧化状态下 In oxidizing media	无氧化状态下 In non oxidizing media		
碳钢冲孔板 Tanged carbon steel sheet	≥48	-10~450	-10~550	30~35	15~20
SS304, SS316 冲孔板 SS304, SS316 Tanged	≥48	-240~450	-200~600	30~40	15~30
SS304, SS316 平板 SS304, SS316 Flat sheet	≥45	-240~450	-200~600	40~50	10~15
SS304 网板 SS304 Mesh	≥40	-240~450	-200~600	30~35	15~20

增强材料 Reinforced inserted material	透气性Gas permeability (cm <sup>3</sup> /min) (厚度Thickness 1.5mm)	密封性Sealability (厚度Thickness 1.5mm)		密封常数Sealing constants	
		N <sub>2</sub> m <sup>3</sup> /hr	Bumming oil A m <sup>3</sup> /hr	因数 M <sup>3</sup> factor	予紧比压 “Y” stress psi
碳钢冲孔板 Tanged carbon steel sheet	≤0.8	30	<0.5	3.0	9000
SS304, SS316 冲孔板 SS304, SS316 Tanged	≤0.8	60	<0.5	2.5	4000
SS304, SS316 平板 SS304, SS316 Flat sheet	≤0.4	35	<0.5	2.0	900
SS304 网板 SS304 Mesh	≤1.0	70	<0.5	3.0	5000

▶ G2101 马口铁冲孔石墨增强垫片 (不带环)	G2101 PURE GRAPHITE GASKET WITH CS TANGED INSERT (WITHOUT EYELET)
▶ G2102 304不锈钢冲孔石墨增强垫片 (不带环)	G2102 PURE GRAPHITE GASKET WITH SUS304 TANGED INSERT (WITHOUT EYELET)
▶ G2103 316不锈钢冲孔石墨增强垫片 (不带环)	G2103 PURE GRAPHITE GASKET WITH SUS316 TANGED INSERT (WITHOUT EYELET)
▶ G2104 304不锈钢胶粘石墨增强垫片 (不带环)	G2104 PURE GRAPHITE GASKET WITH SUS304 FOIL INSERT (WITHOUT EYELET)
▶ G2105 316不锈钢胶粘石墨增强垫片 (不带环)	G2105 PURE GRAPHITE GASKET WITH SUS316 FOIL INSERT (WITHOUT EYELET)
▶ G2106 马口铁冲孔石墨增强垫片 (带内环)	G2106 PURE GRAPHITE GASKET WITH CS TANGED INSERT (WITH INNER EYELET)
▶ G2107 304不锈钢冲孔石墨增强垫片 (带内环)	G2107 PURE GRAPHITE GASKET WITH SUS304 TANGED INSERT (WITH INNER EYELET)
▶ G2108 316不锈钢冲孔石墨增强垫片 (带内环)	G2108 PURE GRAPHITE GASKET WITH SUS316 TANGED INSERT (WITH INNER EYELET)
▶ G2109 304不锈钢胶粘石墨增强垫片 (带内环)	G2109 PURE GRAPHITE GASKET WITH SUS304 FOIL INSERT (WITH INNER EYELET)
▶ G2110 316不锈钢胶粘石墨增强垫片 (带内环)	G2110 PURE GRAPHITE GASKET WITH SUS316 FOIL INSERT (WITH INNER EYELET)
▶ G2111 马口铁冲孔石墨增强垫片 (带内外环)	G2111 PURE GRAPHITE GASKET WITH CS TANGED INSERT (WITH INNER & OUTER EYELET)
▶ G2112 304不锈钢冲孔石墨增强垫片 (带内外环)	G2112 PURE GRAPHITE GASKET WITH SUS304 TANGED INSERT (WITH INNER & OUTER EYELET)
▶ G2113 316不锈钢冲孔石墨增强垫片 (带内外环)	G2113 PURE GRAPHITE GASKET WITH SUS316 TANGED INSERT (WITH INNER & OUTER EYELET)
▶ G2114 304不锈钢胶粘石墨增强垫片 (带内外环)	G2114 PURE GRAPHITE GASKET WITH SUS304 FOIL INSERT (WITH INNER & OUTER EYELET)
▶ G2115 316不锈钢胶粘石墨增强垫片 (带内外环)	G2115 PURE GRAPHITE GASKET WITH SUS316 FOIL INSERT (WITH INNER & OUTER EYELET)
其它根据客户来样或要求供货 Others can be supplied according to customer's requirement or sample.	

### G2120缠绕垫片

缠绕垫片能用于密封流体，压力可达250bar，温度在-200C~1000℃，该垫片广泛 用于油类，气体，石化及工程工业。

#### SPIRAL WOUND GASKETS

Spiral Wound Gaskets can be used to seal fluid pressure up to 250 bar cryoprines temperature as low as -200°C and up to elevated temperature of 1000°C. Products are widely used in the oil, gas, petrochemical process and engineering industries.



#### 缠绕垫片的种类 Spiral wound gaskets type:

编号	种类Type	厚度(mm)Thickness(mm)	
G2121	基本型Basic form	3.2	4.5
G2122	带内环With inner ring		4.5
G2123	带外环With outer ring		4.5
G2124	带内外环With inner and outer ring		4.5

#### 结构材料Structure type:

填充料Filler	钢带Hoop	内环Inner ring	外环Outer ring
石棉Asbestos	SUS 304	碳钢Carbon steel	碳钢Carbon steel
石墨Graphite	SUS 316	SUS 304	SUS 304
四氟PTFE	SUS 316L	SUS 316	SUS 316
		SUS 316L	SUS 316L

#### 下表用于对内环及缠绕金属的材质选择

The table below may be used for selected material of inner ring and winding metal. :

商品名Trade name	AISI	硬度Hardness (HB/HV)	温度 Temperature(℃)
不锈钢Stainless steel 304	304	130~180	-250~+550
不锈钢Stainless steel 316	316	130~180	-100~+550
不锈钢Stainless steel 316L	316L	130~190	-100~+550

外环通常由经防腐处理的碳钢组成。The outer ring is generally manufactured from carbon steel with an anti-corrosion treatment.

#### 下表是用于确立填充材料 The table below may be used for determining the correct filler.

填充材料Filler material	温度Temperature(℃)	最大操作压力 Max operating pressure(kg/cm <sup>2</sup> )
石墨Graphite	-200~550	250
石棉 Asbestos	-150~450	100
四氟PTFE	-240~260	100

#### 法兰种类及缠绕垫片形式 Flange type and Spiral Wound Gasket form

法兰种类Flange type	缠绕垫片形状Spiral Wound Gasket form
平面法兰Flat face flange (F. F)	仅带外环垫片Gasket with an outer ring
凸面法兰Raised face flange (R. F)	带内外环垫片Gasket with an inner and outer ring
凹凸法兰Male and female flange (M & F)	仅带外环垫片Gasket with an outer ring
槽法兰 Tongue and groove flange (T & F)	带内外环垫片Gasket with an inner and outer ring
平面和凹槽法兰 Flat and groove flange (F & G)	基本型垫片Basic form gasket
	仅带内环垫片Gasket with an inner ring
	基本型垫片Basic form gasket
	仅带内环垫片Gasket with an inner ring
	基本型垫片Basic form gasket
	仅带内环垫片Gasket with an inner ring



## 厚度公差 Tolerances of thickness

项目Item	厚度Thickness (mm)	公差Tolerances (mm)
垫片厚度Gasket thickness	4.5, 3.2	+0.2    -0.1
环厚度Ring thickness	3.0	±0.24

下表是产品直径公差（即用于法兰的名义管道直径）

The table below specifies the production diameter tolerance (Nominal pipe diameter for flanges in accordance with):

	DIN (mm)	ANSI B16.5 BS1560 (mm) Mss sp-44	API 605	公差 Tolerances
内环内径 垫片内径 Inner ring I.D.	≤600	≤24"	≥26" and ≤34"	±0.5
	>600 and ≤800	>24" and ≤34"	≥36" and ≤60"	±0.9
	>800 and ≤1600	>34" and ≤60"		±1.3
Gasket I.D.	>1600	>60"		±1.6
垫片外径 Gasket O.D.	≤600	≤24"	≤24"	±0.9
	>600 and ≤1600	>24" and ≤60"	>24" and ≤60"	±1.8
	1600	>60"		±2.2
外环外径Outer ring O.D			≥1/2" and ≤60"	±0.9
	≤600	≤24"		0-1.0
	>600 and ≤1000	>24" and ≤34"		0-1.8
	>1000 and ≤1600	>34" and ≤60"		0-2.2

注：另外，我们也可以根据JIS, JPI标准或客户要求生产。Note: 1. We also can produce according to JIS, JPI standards or clients requirement.

## G2130金属环垫

金属环垫是用金属材料加工而成的垫片，适用于高温高压密封。

### RING JOINT GASKETS

Ring Joint Gasket are metallic sealing rings suitable for high pressure and high temperature duties.

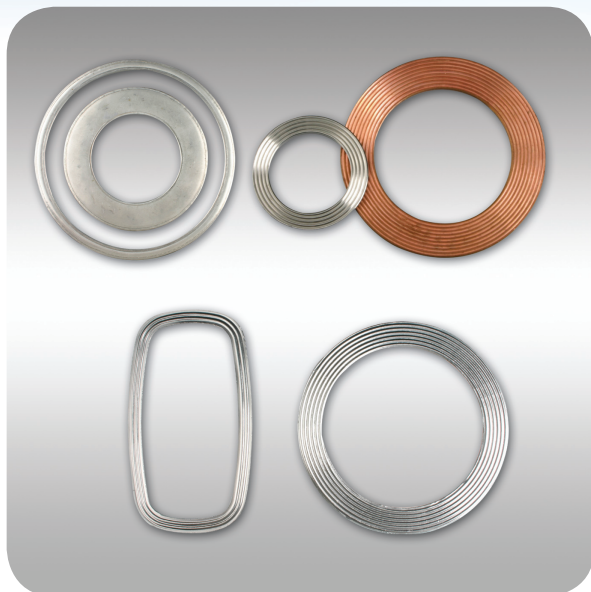
### 结构类型 Section Type:

编号	类型Type	耐压Pressure Mpa
G2131	椭圆形Oval	70
G2132	八角型Octogonal	70
G2133	特殊八角型Rx	70
G2134	特殊八角型Bx	150

### 材料选择 Material:

Material	Identification	Max, Hard	Temperature (°C)
Soft Iron	D	90	540
Low Carbon Steel	S	120	540
5Cr0.5Mo	A182-F5	130	650
SS304	SS304	160	800
SS316	SS316	160	800
SS316L	SS316L	150	800





**G2140齿形垫片**

SERRATED GASKET

**G2141齿形垫片(不覆石墨)**

SERRATED GASKET(No covers graphite)

**G2142齿形垫片(全覆石墨)**

SERRATED GASKET( Covers graphite)

**G2150波齿垫片**

CORRUGATED GASKET

**G2151波齿垫片(不覆石墨)**

CORRUGATED GASKET(No covers graphite)

**G2152波齿垫片(全覆石墨)**

CORRUGATED GASKET(Covers graphite)

**G2160波纹垫片**

CORRUGATED GASKET

**G2161波纹垫片(不覆石墨)**

CORRUGATED GASKET(No covers graphite)

**G2162波纹垫片(全覆石墨)**

CORRUGATED GASKET(Covers graphite)

**G2163波纹垫片(覆石墨条)**

CORRUGATED GASKET(Covers graphite strip)

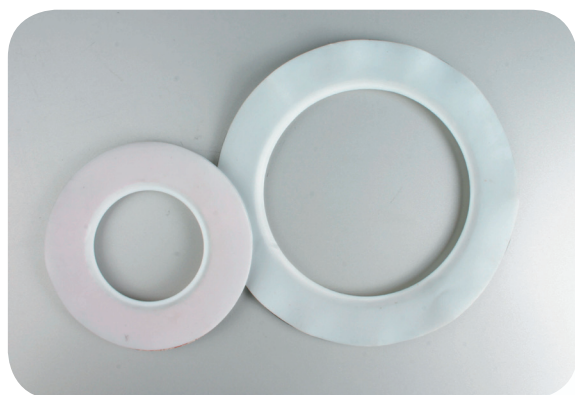
**G2200金属包覆垫片**

METAL JACKETED GASKET



**G2190非石棉垫片**

Non-ASBESTOS GASKET



**G2170四氟夹包垫片**

PTFE ENVELOPEN GASKET



**G2210四氟垫片**

PTFE GASKET



## Y3100膨胀石墨线

柔性石墨分别与天然纤维、合成纤维、金属合金丝等增强材料复合成各种石墨线，经过特殊的工艺技术可以制成不同的编织盘根，它适用于在不同的介质情况，温度及压力的密封，而且，可根据苛刻腐蚀环境及用户需求，在石墨线中加入防止腐蚀的缓蚀剂类密封元件，性能更完美。

### EXPANDED GRAPHITE YARNS

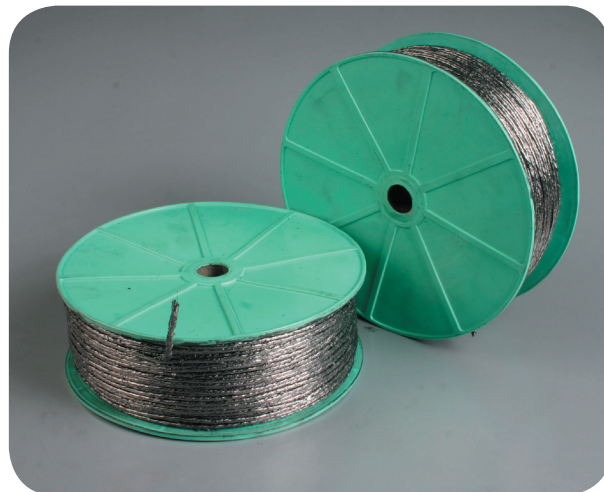
In order to manufacture different kinds of reinforced Expanded(flexible) graphite yarns to be used for making different kinds of braided expanded graphite packing, we use expanded graphite as basic material, mixing with natural fiber, synthetic fiber, metal alloy wire(respectively) and proper binding agent, then through specially designed technological process. The braided packing made of these expanded graphite yarns reinforced with different kinds of fibers and metal alloy wires, are suitable for sealing under different media, circumstance, temperature and pressure. Furthermore, for using these products under severely corrosive circumstance upon the demands of customers, inhibitors of corrosion can be added into the graphite yarns for making the properties of the graphite sealing parts more perfect.

#### 主要特性Main properties:

项 目Items	结 果Result
硫含量Sulphur content	<1100ppm
氯含量 Chlorine content	<50ppm
石墨中的碳含量Carbon content of graphite	99%
灰份Ash content	<0.8%

#### 适用条件 Applicable conditions:

压力Pressure	3~50MPa
温度Temperature	-200~600℃
线速度Velocity	0~20m/s
PH值PH range	0~14



膨胀石墨线类型 Types of expanded graphite yarns		规格Specification 名义直径 (2mm) 名义直径 (3mm) Nominal diameter	
Y3100 棉纱增强的膨胀石墨线	Expanded graphite yarns reinforced with cotton	大约about 3g/m	大约about 5g/m
Y3101 玻纤增强的膨胀石墨线	Expanded graphite yarns reinforced with glass fiber	大约about 3g/m	大约about 5g/m
Y3103 SS304不锈钢丝增强的膨胀石墨线	Expanded graphite yarns reinforced with SS304	大约about 3g/m	大约about 5g/m
wire		大约about 3g/m	大约about 5g/m
Y3104 SS316不锈钢丝增强的膨胀石墨线	Expanded graphite yarns reinforced with SS316	大约about 3g/m	大约about 5g/m
wire		大约about 3g/m	大约about 5g/m
Y3105 Ni丝增强的膨胀石墨线	Expanded graphite yarns reinforced with NI wire	大约about 3g/m	大约about 5g/m

其它根据客户来样或要求供货

Others can be supplied according to customer's requirement or sample.



## Y3110纯四氟编织线

PTFE YARN

## Y3111纯四氟线

PURE PTFE YARN

## Y3112含油四氟线

PTFE YARN WITH OIL

### Y3120四氟石墨线

采用进口聚四氟乙烯原料，添加准纳米级高纯石墨粉，经特殊加工工艺而成。各原料组分高度互溶，具有高强度、耐腐蚀、低蠕变、热传导性优良等特性。用于编织密封填料。可供规格：2g/m、2.5g/m、3g/m

#### PTEF graphite yarn

Made of imported PTEF and quasi-nm-level high-pure powdered graphite through special process, having good compatibility of ingredients, high strength, low creep, good corrosion-resistance and thermal conductivity used for braiding of seal packings.

Specifications available: 2g/m, 2.5g/m, 3g/m.



### Y3121 高强度四氟石墨线（石墨含量12%）

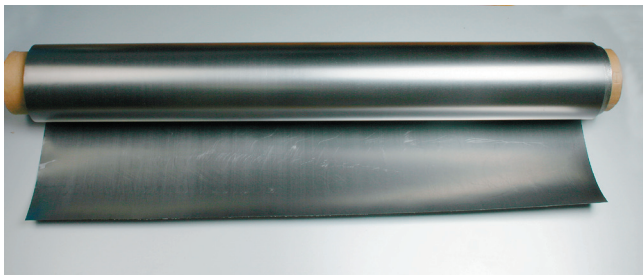
PTFE GRAPHITE YARN HIGH STRONG (GRAPHITE CONTENT 12%)

### Y3122 高强度四氟石墨线（石墨含量25%）

PTFE GRAPHITE YARN HIGH STRONG (GRAPHITE CONTENT 25%)

### Y3123 普通强度四氟石墨线（石墨含量12%）

PTFE GRAPHITE YARN GENERAL STRONG (GRAPHITE CONTENT 12%)



### S4100膨胀石墨卷材

天然石墨鳞片经过化学处理形成石墨层间化合物，然后，这种化合物经过加热迅速分解，结果变成颗粒状的膨化物，这种像虫一样的石墨粉的密度约为0.003g/cc。然后，经滚压形成石墨板。

#### EXPANDED GRAPHITE ROLLING (SHEETS)

Natural graphite flake is chemically treated to form Graphite Intercalation Compound. This intercalation compound is then rapidly heated to decomposition. The result is a rapid expansion of the particle size. The bulk density of the worm-like graphite powders is about 0.003g/cc. Then they are formed into graphite sheets by rolling.

主要应用范围Principal applications:

- ★ 填料 Glands
- ★ 用于法兰的垫片 Gaskets used in flanges, covers of observation holes, level meters.
- ★ 直接有效地用于气体密封的金属表面 Direct attach to the metal surfaces for gas phase sealing effectively.
- ★ 尤其是膨胀石墨卷材可以作为自动生产线的材料 Especially the expanded graphite rolls can be used as a material for automatic producing lines.



## 膨胀石墨卷材的规格 Specification of expanded graphite rolling

项 目Item	单 位Unit	数 值Value
密度公差 Tolerance of density	g/cm <sup>3</sup>	-0.06~+0.06
厚度公差Tolerance of thickness	mm	-0.04~+0.04
碳含量Carbon content	%	99
抗拉强度Tensile strength	MPa	4.5
压缩率Compressibility	%	>40
回弹率Recovery	%	>10
硫含量Sulphur content	ppm	<1100
氯含量Chlorine content	ppm	<45
温度Temperature	°C	-200~+600

### 卷材尺寸 Rolling sheet size:

密度Density (g/cm <sup>3</sup> )	长度(m) Length (m)	宽度(mm) Width (mm)	厚度(mm) Thickness (mm)
0.8 (or) 1.0 (or) 1.1	30, 50, 80, 或其它的尺寸	<=1500 recommend use 1000mm	0.2~1.0 recommend use 0.2, 0.25, 0.3, 0.4, 0.5, 0.6, 0.75, 0.8mm

特殊的规格可按要求生产 Special specification can be produced for requirement.

## S4200增强石墨板

增强石墨板又称高强石墨板是由膨胀石墨板与不同的冲刺，平面，或网孔钢板复合而成，它具有热稳定性，高强及无冷流性的特点，是各种增强石墨垫片，加工发动机垫片等的理想材料。

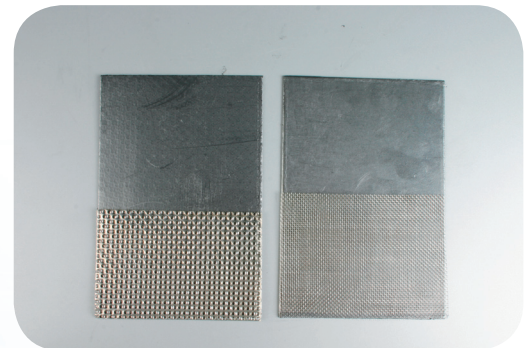
### REINFORCED EXPANDED GRAPHITE SHEET

Reinforced expanded graphite sheet is comprised of expanded graphite sheet and various steel sheets such as tanged, flat or mesh. It has character of thermally stability, high strength and no cold flow etc. It is an ideal material of all kinds of reinforced graphite gaskets, engine heat gaskets etc..

#### 尺寸size:

类型Style	长 (mm)Length	宽 (mm)Width	厚Thickness (mm)
冲刺增强型Reinforced tanged insertion	<=2000	<=1500	1.0~3.0
平板胶粘型Flat adhesive bond insertion	<=2000	<=1500	0.8~3.0

- |                    |   |
|--------------------|---|
| ▶ S4210 马口铁冲刺增强石墨板 | S4210 PURE GRAPHITE SHEET WITH CS TANGED INSERT     |
| S4220 304冲刺增强石墨板   | S4220 PURE GRAPHITE SHEET WITH SUS304 TANGED INSERT |
| ▶ S4230 316冲刺增强石墨板 | S4230 PURE GRAPHITE SHEET WITH SUS316 TANGED INSERT |
| S4240 304平板增强石墨板   | S4240 PURE GRAPHITE SHEET WITH SUS304 FOIL INSERT   |
| ▶ S4250 316平板增强石墨板 | S4250 PURE GRAPHITE SHEET WITH SUS316 FOIL INSERT   |
| S4260 304网板增强石墨板   | S4260 PURE GRAPHITE SHEET WITH SUS304 WIRE INSERT   |
| ▶ S4270 316网板增强石墨板 | S4270 PURE GRAPHITE SHEET WITH SUS316 WIRE INSERT   |



### F5110膨胀四氟密封带

膨胀四氟密封带用100%的聚四氟乙烯制成，它具有优异的耐酸碱腐蚀性，极高的抗张强度与回弹性，特别适合在食品、饮料、生物化工、制药行业设备的法兰密封，不用预制垫片，使用随意性强。

#### EXPANDED PTFE JOINT SEALANT

Expanded PTFE Joint sealant is made from 100% pure PTFE. It has excellent anti-acid & anti-alkalis. And well-done tensile strength recovery. Especially, used in food, drink, chemical etc, unneed to make gasket, It can be used easily.

#### 适用条件 Applicable conditions:

压力Pressure	20MPa
温度Temperature	-240~280°C
PH值PH range	0~14



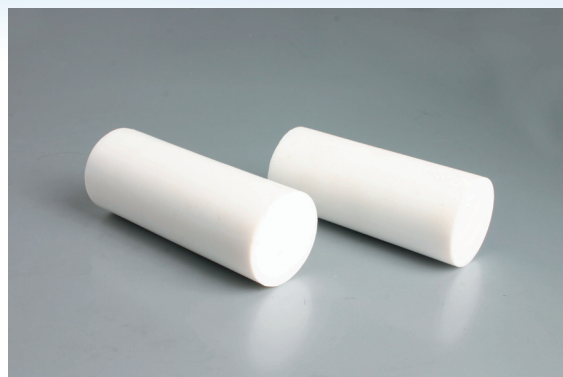
厚度(mm)	宽度(mm)	长度(m)
Thickness(mm)	Width(mm)	Length(m)
3.0	1.5	30
3.0	2.0	30
4.0	2.0	20
5.0	2.0	20
5.0	2.5	20
5.0	3.0	20
6.0	3.0	15
7.0	2.5	15
7.0	3.0	15
8.0	3.0	15
8.0	3.5	15
9.0	4.0	10
10	3.0	10
10	3.5	10
10	4.0	10
12	4.0	8
13	5.0	10
14	5.0	5
15	3.0	5
16	3.0	5
16	5.0	5

厚度(mm)	宽度(mm)	长度(m)
Thickness(mm)	Width(mm)	Length(m)
17	6.0	5
19	3.0	5
20	3.0	5
20	5.0	5
20	7.0	5
22	5.0	5
25	5.0	5
25	10	5
28	5.0	5
30	3.0	5
30	4.0	5
30	5.0	5
35	3.0	5
35	4.0	5
40	3.0	5
40	4.0	5
45	3.0	5
50	3.0	5
50	5.0	5

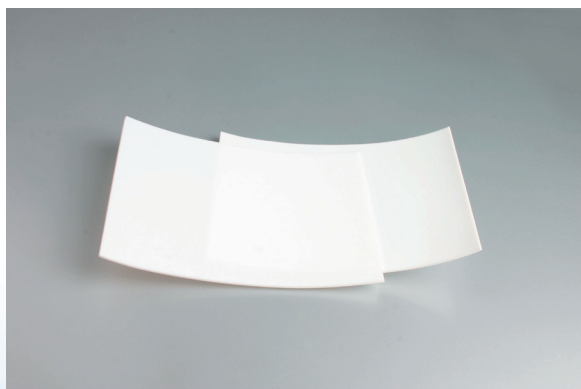




**F5200膨胀四氟阀杆填料**  
F5200 EXPANDED PTFE VALVE STEM  
PACKING



**F5300四氟棒**  
F5300 PTFE ROD



**F5400四氟板**  
F5400 PTFE SHEET  
**F5410四氟车削板**  
F5410 PTFE SKIVED SHEET  
**F5420四氟模压板**  
F5420 PTFE MOLDED SHEET



**石墨波纹带**  
GRAPHITE RIBBON PACKING



**GT 膨体玻璃纤维带**  
GT GLASSFIBER TAPE



**GC 膨体玻璃纤维布**  
GC GLASSFIBER CLOTH





AY 石棉纤维纱

AY ASBESTOS YARN



AT 石棉纤维带

AT ASBESTOS TAPE



AC 石棉纤维布

AC ASBESTOS CLOTH



陶瓷纤维纱

CYG525X2 CYG1000X2

陶瓷纤维纱 (玻纤增强)

CERAMIC YARN (REINFORCED WITH GLASSFIBER)

CYS525X2 CYS1000X2

陶瓷纤维纱 (不锈钢丝增强)

CERAMIC YARN (REINFORCED WITH SUS WIRE)



CT 陶瓷纤维带

CT CERAMIC TAPE



CC 陶瓷纤维布

CC CERAMIC CLOTH



GY 膨体玻璃纤维纱

GY GLASSFIBER YARN



GR 膨体玻璃纤维盘根

GR GLASSFIBER ROPE



CR 陶瓷纤维盘根

CR CERAMIC ROPE